



Australian Government  
Department of Industry, Science,  
Energy and Resources

# AusIndustry

# AusIndustry

## Building Better Regions #6



[business.gov.au](https://business.gov.au) | call 13 28 46

# Merit Criteria

---

## Assessment criterion 1

### Economic benefits of your project for the region (15 points)

You should demonstrate this by identifying:

- the extent to which your project meets the needs of the regional community
- the broader economic benefits that your project will deliver for the region and community during and beyond the term of funding.

Economic benefits for a region may cover increases in economic activity, improvements in productivity, wider access to markets or fairer and more equitable economic outcomes.

Examples of how your project could deliver economic benefits may include but is not limited to:

- increasing the number or value of jobs, new businesses or the production of goods and services in the region (this includes direct and indirect opportunities created through the project)
- providing opportunities for growth and/or increasing efficiencies in existing sectors, e.g. tourism, agriculture, manufacturing
- the use of local suppliers and goods, especially those that employ the use of sustainable work practices/goods
- increasing efficiency of the transport system or service delivery
- increasing Indigenous economic participation, including Indigenous employment and supplier-use outcomes.

In your application, you **must include the total employment** numbers you expect to create during and following your project. You will need to identify how many of these employees will be Indigenous. You must substantiate any employment numbers with evidence. For information about determining employment numbers for your application, see Appendix C.

# Merit Criteria

---

## Assessment criterion 2

### Social benefits of your project for the region (15 points)

You should demonstrate this by identifying:

- the extent to which your project meets the needs of the regional community
- the broader social benefits that your project will deliver for the region and community during and beyond the term of funding
- the socioeconomic impact of your project and the need or problem your project will solve, as well as the impact of your project in the community it will benefit
- the extent to which your project addresses disadvantage in the region or community.

Social benefits for a region may cover increases in regional amenity, improving community connections and inclusion and providing opportunities for learning and knowledge creation.

Examples of how your project could deliver social benefits may include but is not limited to:

making a region a more attractive place to live

the degree to which the project fills a 'gap' within the community

improving community connections and social inclusion

supporting or protecting local heritage and culture

increasing community volunteering

supporting upskilling and capability development in the region and the community.

# Merit Criteria

## Assessment criterion 3

### Capacity, capability and resources to deliver the project (5 points)

You should demonstrate this by identifying:

- your track record managing similar projects and access to personnel and/or partners with the right skills and experience
- how you will seek to provide opportunities for local procurement of goods, labour and services
- sound project planning to manage and monitor the project, which addresses scope, implementation methodology, timeframes, budget, community consultation, and risk management
- how you will operate and maintain the infrastructure and benefits of the project into the future
- your readiness to commence the project, including access. You should describe the steps you have taken to get your project investment ready including – see right...

-Demonstrate this by evidence of required regulatory and/or development approvals

-project designs and costings

-authority from the land or infrastructure owner to undertake the project at the nominated site(s)

-funding contributions from all sources.

-For investment ready projects, if your project is still in the planning or concept stage, it is not likely to be competitive.

# Merit Criteria

---

## Assessment criterion 4

### Impact of funding on your project (5 points)

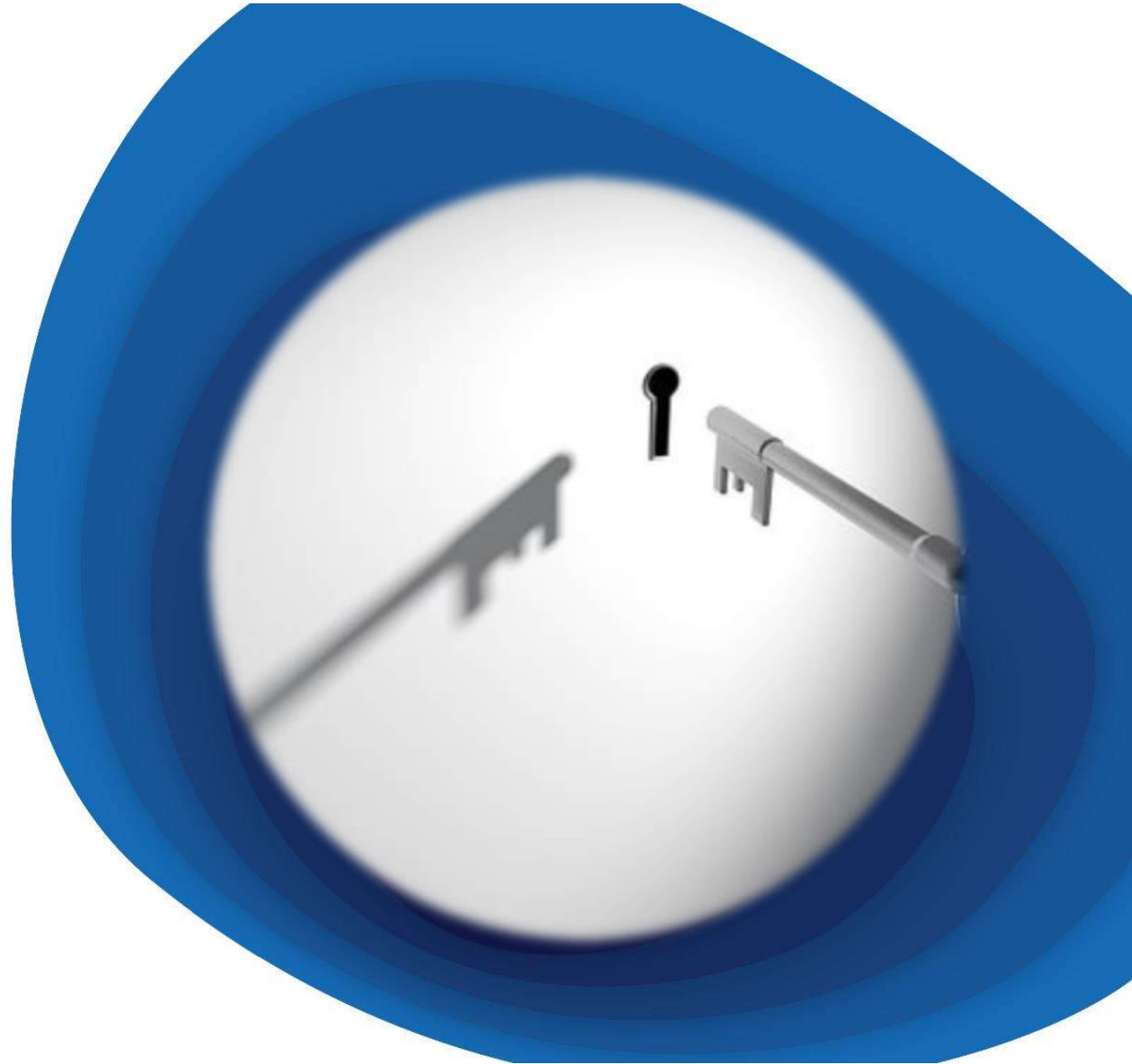
You should demonstrate this by identifying:

- your plan for engagement and collaboration to ensure community support for your project. In your response you can describe:
  - the total investment the grant will leverage including additional cash contribution and in-kind support
  - the extent that your project increases investment and builds partnerships in your region.
- the likelihood the project would proceed without the grant. If not, why not? Explain how the grant will impact the project in terms of size, timing and reach.
- if you have already received Commonwealth funding for this project or an associated project, explain why you need additional funding.

Community support can be further demonstrated by strong letters of support from key people in the community / region

## Tips

- **Plan your application from the finish date back.**
- **Get onto your letters of support now.**
- **Keep a word copy of your application, particularly the merit criteria.**
- **Be scrupulous with your words.**



# When things go wrong

- **If it is a technical issue - call the hotline 13 28 46**
- **Take a screenshot (as evidence)**
- **If it is in relation to data / evidence - contact Edwina or your nearest RDA for assistance and support.**
- **If it is in relation to the project – go back to your partners.**



# Thankyou



Australian Government  
Department of Industry, Science,  
Energy and Resources

**AusIndustry**

Nicola James  
AusIndustry Regional Manager SW NSW  
0429 838 024

[business.gov.au](https://business.gov.au) | call 13 28 46